



~~\$118~~ \$99

You are interested in the AirFit P10. Great choice! This mask is a customer favorite and our lowest priced nasal pillow mask. For your convenience, Easy Breathe has compiled everything you need to know about AirFit P10 Nasal Pillow System.

## Why Choose the AirFit P10?



The AirFit P10 is 50% lighter than its predecessor the Swift FX.



It is also 50% quieter. You *and* your bed partner can sleep soundly with the P10.



A recent clinical study found that CPAP patients received 40 minutes more sleep per night using AirFit P10.

# Table of Contents

Prescription Requirements.....	2
Choosing a Size for the P10.....	2
How to Assemble the AirFit P10.....	3
How to Adjust the P10 Mask.....	3
Cleaning the P10.....	4
Troubleshoot the P10 Mask.....	4
Replacement Parts.....	5
Ordering Instructions.....	5

## Prescription Requirements

A prescription is required to purchase the AirFit P10 mask system as a complete set. Easy Breathe can contact your doctor for you and request a prescription. If you prefer you can take a blank prescription to your next doctor's appointment. See page 6 for a blank prescription

### No Prescription?

You can purchase the AirFit P10 in two parts in order to bypass the prescription requirement. You will receive everything you need for the AirFit P10 mask if your purchase these two items.

## Choosing a Size for the P10

When you purchase an AirFit P10 Nasal Pillow Mask System with a prescription, you will receive 3 nasal pillows in three different sizes. You can test the different sizes and see which one works best for you.

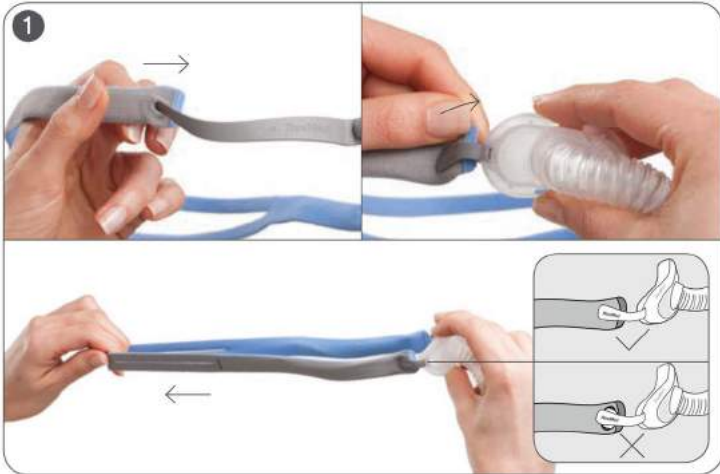
**AirFit P10** includes - S, M, L nasal pillows

**AirFit P10 for Her** includes - XS, S, M nasal pillows

The headgear stretches and is one size fits all.

If you need to purchase the P10 without a prescription, you will need to select a size for the nasal pillow. There is no current sizing guide for the Airfit P10 pillows but medium fits most males, and small fits most females.

# How to Assemble the AirFit P10



## STEP 1:

With the gray side facing out, insert each end of the headgear strap over the stabilizers through the buttonholes. Secure in place by wrapping each strap end up and around the nodes. Holding the split straps, pull the headgear from the stabilizer to ensure it is tightly secure around the nodes. Ensure the headgear strap is not twisted.



## STEP 2:

Attach the pillows to the mask frame by inserting the top and bottom clips into the correct slots (shorter clip into top slot, longer clip into bottom slot) on the mask frame. Your mask is now assembled.



## STEP 3:

Ensure the inner walls of the nasal pillows are not compressed or collapsed. If they are, squeeze each nasal pillow so they return to the correct shape.

[Click here for video assembly instructions. Assembly instructions begin at 2:08.](#)

# How to Adjust the AirFit P10

To achieve a comfortable fit, adjust the split straps by spreading them apart to loosen or draw them closer together to tighten.

Loosen      Tighten      Tighter



# Cleaning the P10 Mask

1. Disassemble the pillows from the frame.
2. Thoroughly clean the separated mask components (excluding headgear), by gently rubbing in warm (approximately 86°F/30°C) water using mild soap.
3. Use a soft bristle brush to clean the vent.
4. Inspect each component and, if required, repeat washing until visually clean.
5. Rinse all components well with drinking quality water and allow to air dry out of direct sunlight. Dry the vent by gently wiping with a cloth.
6. When all components including the vent are dry, reassemble according to the reassembly instructions.

## Troubleshooting

**Pillows won't seal properly, mask is uncomfortable or causes red marks.**

Check that the nasal pillows with the left (L) and right (R) indicators are inserted correctly (L into your left nostril, R into your right nostril).

Inner wall position of one or both pillows may be incorrect. Squeeze pillow sides to release inner wall.

Clean the nasal pillows.

Pillows may be the wrong size. Exchange your mask or purchase a new pillow in a different size for \$19.

**Headgear has stretched out and it is too loose.**

Wash headgear to help it return to its original form. Use warm water and lay flat to dry out of direct sunlight.

# AirFit P10 Replacement Parts

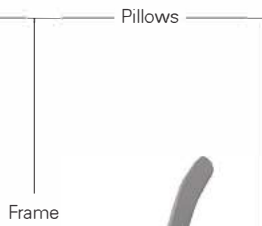


QuickFit elastic headgear  
**62935**

QuickFit for Her elastic headgear  
**62936**



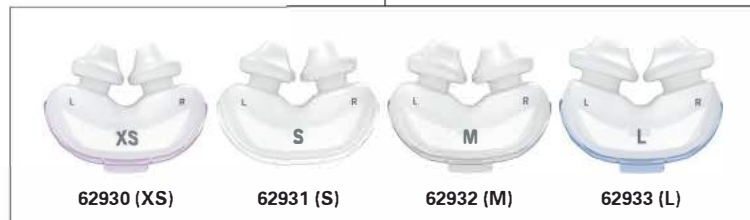
Frame system (includes frame and pillows)  
**62920 (XS)**  
**62921 (S)**  
**62922 (M)**  
**62923 (L)**



Pillows



Frame



**62930 (XS)**

**62931 (S)**

**62932 (M)**

**62933 (L)**

Pillows

- XS** Extra Small
- S** Small
- M** Medium
- L** Large

## Product Codes

AirFit P10 - complete system	<b>62900</b>
AirFit P10 for Her - complete system	<b>62910</b>

## Ordering Instructions

[Click here to purchase the AirFit P10 online.](#)

[Click here to browse replacement parts.](#)

Call 866-564-2252 to order over the phone.

**Patient Contact Information**

**Name:** \_\_\_\_\_ **D.O.B:** \_\_\_\_\_  
**Address:** \_\_\_\_\_  
**City:** \_\_\_\_\_ **State:** \_\_\_\_\_ **Zip:** \_\_\_\_\_  
**Phone:** \_\_\_\_\_ **Email:** \_\_\_\_\_

**Physician Contact Information**

**Name:** \_\_\_\_\_ **Email:** \_\_\_\_\_  
**Address:** \_\_\_\_\_  
**City:** \_\_\_\_\_ **State:** \_\_\_\_\_ **Zip:** \_\_\_\_\_  
**Phone:** \_\_\_\_\_ **Fax:** \_\_\_\_\_  
**National Provider Identification ("NPI") Number** \_\_\_\_\_

**Diagnosis Code (Check 1 or both)**

327.23 Obstructive Sleep Apnea Functional Limits: OSA       327.27 Central Sleep Apnea Functional Limits: CSA

**Please Indicate Type of PAP Equipment and Pressure (pressure is optional for Auto)**

**PAP Options:**     CPAP (E0601)     Bi-Level (E0470)     Bi-Level w/ RAD Back-up (E0471)  
 Non-Auto: \_\_\_\_\_ IPAP \_\_\_ EPAP \_\_\_    IPAP \_\_\_ EPAP \_\_\_  
 Auto:                      4 to 20 cm H2O

**Supplies (check all that apply)**

**Humidification**

Mask and other necessary supplies (see list below)       To include heated humidifier  
 Check here to indicate other products \_\_\_\_\_       Other \_\_\_\_\_  
Default order is for 99 months, unless indicated here  Other \_\_\_\_\_

**Detailed List of Supplies Necessary for the Proper Operation of PAP Equipment.**

Full-Face Mask (A 7030)	Headgear (A7035)	Oral Interface (A7044)
Full-Face Cushion (A7031)	Chinstrap (A7036)	Exhalation Port/Swivel (A7045)
Mask Cushion (A7032)	Tubing (A7037)	Humidifier Chamber (A7046)
Nasal Pillows (A7033)	Disposable Filters (A7038)	Non-Disposable Filters (A7039)
Nasal Mask (A7034)	Heated Humidifier Tubing w/Heating Element (A4604)	

Other Comments:

Provider Signature: \_\_\_\_\_ Date: \_\_\_\_\_

(Must be one of the following: Doctor of Osteopathy, Medical Doctor, Psychiatrist, Physician's Assistant, Nurse Practitioners, Dentist, Orthodontist)

**Please sign and return via fax to (877) 883-9709 or via email to [fax@easybreathe.com](mailto:fax@easybreathe.com)**